



PRODUCT GUIDE

TEMPORARY POWER & PORTABLE HVAC SOLUTIONS



4-Horn
POWER & HVAC

4HORNPOWER.COM
888.386.3885



WHY CHOOSE 4-HORN POWER & HVAC?

RELENTLESS CUSTOMER SERVICE

With the newest, fastest-growing fleet in the industry, 4-Horn Power & HVAC combines 24/7 support and expert knowledge to quickly adapt to any challenge.

You can count on us to provide the equipment and tailored solutions that meet your unique needs and keep your business on track.



4-HORN POWER & HVAC WORKS FOR YOU 24/7/365



OUR INDUSTRIES

- ✓ Petrochemical / Industrial
- ✓ Mechanical Contractor Support
- ✓ Event Services
- ✓ Manufacturing
- ✓ Hospitality
- ✓ Medical Facilities
- ✓ Commercial / Schools / Universities



WHY CHOOSE 4-HORN POWER & HVAC?

OUR PEOPLE

We know the power & HVAC markets and are prepared to take on any job, any time, anywhere.

When you engage 4-Horn Power & HVAC, you're dealing with the best in customer service.



OUR FLEET

We have the most meticulously inspected and highest-quality fleet in the market, giving us the ability to solve simple problems or provide customized solutions with reliable equipment.



OUR SOLUTIONS

Whether you need temporary/emergency power, HVAC equipment, heating, cooling, dehumidification or air filtration, we have the equipment to ensure you get the job done right.





POWER PRODUCTS

Generators, Transformers, Automatic Transfer Switches (ATS),
Electric Power Cables, Load Banks, & Temporary Distribution Panels

GENERATORS (20 - 2,000 KW)



Designed to provide long-lasting, reliable power to meet the most demanding requirements and built to withstand tough environments.

Features include:

- Load share and parallel capabilities
- Auto start/stop allows generator to start from a remote location
- Weatherproof steel housing decreases noise level to 65 dB(A)
- Fuel tank capacity allows for lengthy, continuous run time



MODEL	TIER	KW PRIME (STANDBY)	STYLE	DIMENSIONS (LWH)	DRY WEIGHT	WET WEIGHT	TOTAL FUEL CAPACITY	FUEL CONSUMPTION (FULL LOAD)	RUN TIME
DCA25SSIU4F	4F	20 (22)	Trailer	105 in / 57 in / 62 in	2,365 lb	2,705 lb	42 gal	1.62 gph	25 hr
DCA45SSIU4F	4F	36 (40)	Trailer	148 in / 66 in / 77 in	3,395 lb	4,035 lb	79 gal	2.93 gph	27 hr
DCA70SSIU4F	4F	56 (62)	Trailer	166 in / 72 in / 85 in	4,420 lb	5,300 lb	103 gal	4.40 gph	23 hr
DCA125SSIU4F	4F	100 (110)	Trailer	181 in / 79 in / 120 in	7,010 lb	8,210 lb	169 gal	7.11 gph	23 hr
DCA150SSJU4F3	4F	120 (150)	Trailer	213 in / 89 in / 114 in	10,761 lb	13,429 lb	319 gal	8.9 gph	36 hr
DCA180SSJU4F3	4F	144 (180)	Trailer	213 in / 89 in / 114 in	11,092 lb	13,826 lb	319 gal	10.1 gph	32 hr
DCA220SSJU4F3	4F	176 (220)	Trailer	213 in / 89 in / 114 in	11,092 lb	13,671 lb	319 gal	12 gph	27 hr
DCA300SSJU4F3	4F	240 (300)	Trailer	223 in / 99.5 in / 131.5 in	14,140 lb	17,930 lb	430 gal	16.70 gph	26 hr
DCA400SSI4F3	4F	320 (400)	Trailer	264 in / 94 in / 117 in	16,360 lb	19,749 lb	405 gal	22.50 gph	18 hr
DCA600SSV4F3	4F	480 (600)	Trailer	410 in / 102 in / 148 in	22,251 lb	27,806 lb	1,129 gal	33.1 gph	34 hr
XQP1000	4F	1000 (1250)	Trailer	360 in / 96 in / 114 in	43,500 lb	47,000 lb	1,250 gal	68 gph	18 hr
XQ1500	4F	1500 (1360)	Trailer	480 in / 96 in / 162 in	50,000 lb	60,000 lb	1,250 gal	113.63 gph	11 hr
XQ2000	4F	2000 (1825)	Trailer	531.5 in / 96 in / 162 in	84,000 lb	93,000 lb	1,250 gal	127 gph	10 hr





POWER PRODUCTS

I-LINE PANELS (400 - 3,000 AMP)



I-Line panelboards can feed large motor loads and are utilized in most every market segment. Wherever electricity is distributed or controlled, you'll find I-Line Power Panelboards.



MAKE	MODEL	DESCRIPTION
Power Temp Systems	400A	Powder-coated aluminum, stainless hardware, modular design with replaceable gland plates, inverted interior, powder coated steel 4 post rack with pallet jack accessible fork pockets and recessed lifting eyes, hardwire access hatch, hinged deadfront.
Trystar	800A	Male Cam Input, In rolling cage, 27 in. of breaker space. Raised Profile.
Power Temp Systems	800A	Powder-coated aluminum, stainless hardware, modular design with replaceable gland plates, inverted interior, powder coated steel 4 post rack with pallet jack accessible fork pockets and recessed lifting eyes, hardwire access hatch, hinged deadfront.
Power Temp Systems	1200A	Powder-coated aluminum, stainless hardware, modular design with replaceable gland plates, inverted interior, powder coated steel 4 post rack with pallet jack accessible fork pockets and recessed lifting eyes, hardwire access hatch, hinged deadfront.
Power Temp Systems	3000A	Individually accessed 45 degree cam-lok inlets with flip covers and Smart Lug hardware, powder-coated aluminum, stainless hardware, modular design with replaceable gland plates, inverted interior, powder-coated steel 4 post rack with pallet jack accessible fork pockets and recessed lifting eyes, hardwire access hatch, hinged deadfront.

DISTRIBUTION CABLE



TYPE	LENGTH	DESCRIPTION
4/0 Type W Cable	50 ft	400 Amp: Camlock
#2 SC 5-Wire Cable Sets	50 ft	200 Amp: Camlock
4/0 Female Type W Tails	10 ft	400 Amp: Camlock
4/0 Male Tyle W Tails	10 ft	400 Amp: Camlock
#2 SC 5-Wire Banded Tails - Female	10 ft	200 Amp: Camlock
#2 SC 5-Wire Banded Tails - Male	10 ft	200 Amp: Camlock
Cable Ramps	-	5 Channel Crossover



DISTRIBUTION / TRANSFORMERS / VFDs

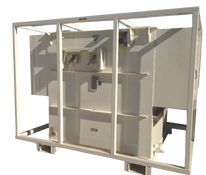


We provide complete power distribution packages.

- Transformers
- Disconnects
- Cable ramps
- Automatic transfer switches
- Load banks
- Variable frequency drives (VFDs)
- Motor starters



TYPE	DESCRIPTION
15 KVA	Cam Set in 10x50 Cam Set
25 KVA	Cam Set in 10x50 Cam Set
50A Spider Box	Cam Set in 6x20A and 1x30A
Motor Starters	5-600 Horsepower / 480V
VFD	10-300 Horsepower / 480V



ALWAYS LEAD, NEVER FOLLOW



FUEL TANKS

FUEL TANKS

Diesel fuel storage tanks enable keeping a ready fuel supply on hand where and when you need it.

Features include:

- Stackable, with forklift pockets that allow for easy moving and placement
- Takes advantage of bulk fuel savings



UP TO 2,388 GAL TANK CAPACITY

MAKE	MODEL	CAPACITY	DIMENSIONS (LWH)	DRY WEIGHT	WET WEIGHT
Western Global	10TCG	251 gal	45.31 in / 45.31 in / 52.17 in	1,131 lb	3,114 lb
Western Global	20TCG	552 gal	90.31 in / 45.35 in / 52.13 in	1,830 lb	6,315 lb
Western Global	H20 TCG-HERC-12VK (TOWABLE)	523 gal	164.8 in / 85 in / 75 in	3,028 lb	7,408 lb
Western Global	30TCG	787 gal	91 in / 61 in / 52 in	2,425 lb	8,721 lb
Western Global	50TCG	1,204 gal	90.87 in / 90.87 in / 52.13 in	3,695 lb	13,329 lb
Western Global	100TCG	2,388 gal	100.83 in / 89.80 in / 99.09 in	7,432 lb	26,539 lb

DEF REPLENISHMENT SYSTEM

Manage diesel exhaust fluid required by Tier 4 Final diesel engines. This system extends runtimes by monitoring the DEF level in diesel powered generators and automatically refills DEF into the generator DEF tank unattended.

Features include:

- Extends generator run time
- Complements applications using external fuel

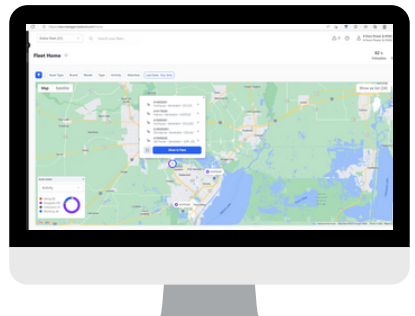
100 GAL TANK CAPACITY



MAKE	MODEL	CAPACITY	FLUID TYPE	DIMENSIONS (LWH)	DRY WEIGHT	WET WEIGHT
Multiquip	DEFTANK	300 gal	Diesel Exhaust fluid, complies with ISO-22241	65.75 in / 44.75 in / 39.80 in	1,050 lb	2,020 lb

TELEMATICS & GPS

- ✓ GPS remote monitoring
- ✓ Accessible via unique TrackUnit URL





COOLING PRODUCTS

DX UNITS (5 - 25 TON)



Packaged air conditioners provide energy-efficient cooling, heating or dehumidification of recirculated air.

Features include:

- Low ambient fan cycling control
- High and low-pressure safety switches
- Single point electrical connections



MAKE	MODEL	COOLING CAPACITY	HEATING CAPACITY	POWER	STATIC PRESSURE	DIMENSIONS (LWH)	WEIGHT	NEMA RATING
Carrier	PPKH-5TD	5 Ton	20 kW	3PH / 460V / 60A	2 in @ 2,000 cfm	6 ft 6 in / 4 ft 4 in / 5 ft 9 in	1,400 lb	4
Carrier	RAV060LOFA0AAA	5 Ton	N/A	3PH / 460V / 30A	2 in @ 2,000 cfm	8 ft / 4 ft 4 in / 3 ft 8 in	1,300 lb	7
Carrier	PPKH-10TD	10 Ton	36 kW	3PH / 460V / 100A	2.2 in @ 4,000 cfm	8 ft 5 in / 6 ft / 5 ft 1 in	2,300 lb	4
Carrier	RASTI9L0AA0AAAA	10 Ton	N/A	3PH / 460V / 30A	2.2 in @ 4,000 cfm	8 ft 5 in / 6 ft / 5 ft 1 in	2,200 lb	7
Smart Family	SLIC12R-MS	12 Ton	16 kW	3PH / 460V / 57-63A	3 in @ 4,000 cfm	95.5 in / 35 in / 75.625 in	2,200 lb	4
CAPS	PPKH-25TD	25 Ton	72 kW	3PH / 460V / 72-118-170A	3 in @ 10,000 cfm	12 ft 8 in / 8 ft 5 in / 5 ft 4 in	4,600 lb	4

INDUSTRIAL AC UNITS (20 - 80 TON)



High static units provide 100% outside air with a 40°F delta.

Features and applications include:

- Rental-ready construction, controls, and connections
- Stainless steel cabinet construction
- Ideal for petrochemical, food processing, manufacturing, hospitals, data centers, and commercial buildings



MAKE	MODEL	COOLING CAPACITY	HEATING CAPACITY	POWER	STATIC PRESSURE	DIMENSIONS (LWH)	WEIGHT	NEMA RATING
CAPS	PPKH-20TD	20 Ton	N/A	3PH / 460V / 51A	7.0 in @ 2,800 cfm	8 ft 11 in / 6 ft 7 in / 7 ft 10 in	4,500 lb	4 / 7
Smart Family	SACP21A-HS	20 Ton	N/A	3PH / 460V / 46.3A	6 in @ 3,200 cfm	72 in / 88 in / 90 in	4,000 lb	4
CAPS	PPKH-40TD-GP	40 Ton	N/A	3PH / 460V / 94A	5.5 in @ 5,600 cfm	12 ft 9 in / 6 ft 8 in / 8 ft	6,300 lb	4
Smart Family	SACP49A-HS	40 Ton	96 kW	3PH / 460V / 165A	5.5 in @ 4,500 cfm	92.5 in / 88 in / 99.75 in	6,200 lb	4
CAPS	PPKH-40TD-XP	40 Ton	N/A	3PH / 460V / 94A	5.5 in @ 5,600 cfm	12 ft 9 in / 6 ft 8 in / 8 ft	6,600 lb	7
CAPS	PPKH-80TD-GP	80 Ton	N/A	3PH / 460V / 166A	6 in @ 10,000 cfm	18 ft / 6 ft 10 in / 8 ft 4 in	9,800 lb	4
Smart Family	SACP87A-HS	80 Ton	144 kW	3PH / 460V / 147-214-211A	5 in @ 12,800 cfm	13 ft / 7 ft / 8 ft 4 in	9,800 lb	4

HYBRID AC UNITS (30 - 40 TON)



Provide cooling, heating, and dehumidification. 100% return air or 100% outside air operations.



MAKE	MODEL	COOLING CAPACITY	HEATING CAPACITY	POWER	STATIC PRESSURE	DIMENSIONS (LWH)	WEIGHT	NEMA RATING
CAPS	PPKH-30TD	30 Ton	60 kW	3PH / 460V / 81-98-108A	4.25 in @ 10,000 cfm	8 ft / 6 ft / 8 ft 5 in	4,200 lb	4
CAPS	PPKH-40TD	40 Ton	90 kW	3PH / 460V / 111-144-223A	4.25 in @ 14,000 cfm	16 ft 5 in / 7 ft 8 in / 6 ft 7 in	8,300 lb	4



COOLING PRODUCTS

VERTICAL AC UNITS (20 - 30 TON)



Deliver custom temperature control for temporary or long-term applications.



Features and applications include:

- Dual-stage heating and cooling circuits with hot gas bypass
- Easy access return air filter and double deflections supply air grille
- Ideal for tent cooling and heating

MAKE	MODEL	COOLING CAPACITY	HEATING CAPACITY	POWER	STATIC PRESSURE	DIMENSIONS (LWH)	WEIGHT	NEMA RATING
Carrier	PC-VA20 G4A45	20 Ton	45 kW	3PH / 460V / 79A	3 in @ 8,000 cfm	36 in / 92 in / 100 in	2,150 lb	4
Smart Family	SAVP31Q	30 Ton	72 kW	3PH / 460V / 125.1A	5 in @ 10,000 cfm	97.5 in / 50 in / 98 in	4,500 lb	4

AIR COOLED CHILLERS (10 - 500 TON)



Self-contained chiller/pump packages are designed and constructed for user-friendly operation and provide state-of-the-art control for your everyday cooling needs.



Features and applications include:

- Staged capacity with precise temperature control
- Shell and tube evaporator
- Applications include petrochemical, food processing, manufacturing, hospitals, data centers, and commercial buildings

MAKE	MODEL	CAPACITY	PUMP SIZE	CAP INLET	POWER	DIMENSIONS (LWH)	WEIGHT	NEMA RATING
NQ Series	NQA10	10 Ton	27 gpm	2 in	3PH / 460V / 30A	75 in / 34 in / 61 in	1,195 lb	4
Carrier	PCHH-30TC	30 Ton	150 gpm	2 in	3PH / 460V / 60A	14 ft 10 in / 4 ft 7 in / 5 ft 5 in	4,550 lb	4
Trane	PCHH-60TC	70 Ton	300 gpm	4 in	3PH / 460V / 133A	17 ft 10 in / 8 ft 5 in / 6 ft 10 in	8,600 lb	4
Carrier	PCHH-100TC	100 Ton	300 gpm	4 in Dixon Quick Connect	3PH / 460V / 144A	17 ft 10 in / 8 ft 4 in / 8 ft 6 in	11,000 lb	4
Carrier	PCHH-200TC	200 Ton	600 gpm	4 in Dixon or 6 in Flanged	3PH / 460V / 422A	24 ft 4 in / 8 ft 4 in / 8 ft 6 in	20,000 lb	4
York	207 Ton Air Cooled	200 Ton	800 gpm	6 in Flanged	3PH / 460V / 422A	25 ft / 8 ft 3 in / 8 ft 5 in	18,720 lb	4
Carrier	PCHH-500TC	500 Ton	1,500 gpm	6 in Flanged	3PH / 460V / 1,000A	22 ft 7 in / 8 ft 6 in / 8 ft 4 in	24,000 lb	4

ALWAYS LEAD, NEVER FOLLOW



COOLING PRODUCTS

AIR HANDLERS (50 - 140 TON)



Water cooled air handlers are designed to provide large volume cooling and climate control by using a chilled water source.

Features include:

- Quiet operation
- Horizontal includes supply and return air duct connections, VFD controlled indoor air blower



MAKE	MODEL	COOLING CAPACITY	DUCT SIZE	SUPPLY DUCTS	RETURN DUCTS	POWER REQUIREMENTS	STATIC PRESSURE	DIMENSIONS (LWH)	WEIGHT	NEMA RATING
CAPS	PAHH-50TC	50 Ton	20 in	2	4	3PH / 460V / 19A	5 in	100 in / 83 in / 59 in	3,250 lb	4
CAPS	PAHH-120TC	120 Ton	20 in	4	6	3PH / 460V / 45A	7 in	12 ft 7.5 in / 12 ft / 8 ft 5.5 in	5,700 lb	4
CAPS	PAHV-140TC	140 Ton	20 in	4	8	3PH / 460V / 52A	6.7 in	98 in / 50 in / 102 in	4,200 lb	4

PORTABLE 1 - 5 TON SPOT COOLERS



Designed to cool commercial spaces, portable 1-5 ton AC units require proper venting and most include both heating and cooling to maintain a constant temperature.

Features and applications include:

- Highly efficient and quiet
- Built to fit through doors
- Provides spot cooling in high temperature areas
- Great for offices, industrial plants, server rooms, hospitals, and laboratories



MAKE	MODEL	COOLING CAPACITY	HEATING CAPACITY	POWER	DIMENSIONS (LWH)	WEIGHT
MovinCool	Climate Pro X14	1 Ton or 13,200 btu hr	N/A	1PH / 115V / 11.5A	22 in / 29 in / 48 in	165 lb
MovinCool	Climate Pro D12	1 Ton or 11,450 btu hr	9,900 btu hr	1PH / 115V / 13.3A	22 in / 27 in / 47 in	181 lb
MovinCool	Climate Pro 18	1-2 Ton or 14,600 btu hr	13,700 btu hr	1PH / 115V / 20A	21 in / 27 in / 49 in	214 lb
MovinCool	Office Pro 60	5 Ton or 60,000 btu hr	N/A	1PH / 208/230V / 50A	30 in / 52 in / 64 in	623 lb
Oceanaire	20ACH 6012	5 Ton or 60,100 btu hr	52,500 btu hr	1PH / 208-2V / 32A	39.5 in / 27.5 in / 52 in	485 lb
Oceanaire	20ACH 6032	5 Ton or 60,100 btu hr	53,500 btu hr	3PH / 208/230V / 20.4A	40 in / 28 in / 52 in	485 lb
Oceanaire	20ACH 6034	5 Ton or 60,100 btu hr	53,500 btu hr	3PH / 460V / 14.8A	40 in / 28 in / 52 in	520 lb
MovinCool	Office Pro 63	5 Ton or 60,000 btu hr	N/A	3PH / 460V / 19.5A	30 in / 52 in / 64 in	705 lb



DRYING PRODUCTS

DESICCANT DEHUMIDIFIERS (395 - 17,500 CFM)



Desiccant dehumidifiers remove moisture from the air using the chemical desiccant, thereby preventing corrosion, mold, and mildew formation.

Features and applications include:

- More effective at very low temperatures than refrigerator coil style units
- Electric, gas, and propane models are available
- Ideal for water damage restoration, construction drying, and industrial condensation prevention



MAKE	MODEL	MOISTURE REMOVAL (MAX)	MOISTURE REMOVAL (AT AHAM)	CFM RATING	AMP RATING	DIMENSIONS (LWN)	WEIGHT
Arid-Dry 2250	CDH-R-126-2.0	230 gpd	158 gpd	2,400	60	91 5/8 in / 35 in / 63 in	1,100 lb
Arid-Dry 5000	CDH-RC2-138	438 gpd	420 gpd	6,000	140.9	100.25 in / 50 in / 96 in	3,300 lb
Arid-Dry	S-18000/15000	1,272 gpd	1,061 gpd	17,500	345	140 in / 100 in / 101 in	9,500 lb



ALWAYS LEAD, NEVER FOLLOW



HEATING PRODUCTS

INDUSTRIAL ELECTRIC



Quiet and include a unique high static fan that allows for recirculation of warm inside air, resulting in even temperatures and energy savings in the most demanding environments.

Features and applications include:

- Rugged, weatherproof enclosures for reliable operation outdoors
- Fits through 36-inch door and offers up to 200 feet of ducting
- Ideal for use in no-flame locations and where noise levels must be kept to a minimum



UP TO
150 kW / 75 kW VFD
HEATING CAPACITY

MAKE	MODEL	CAPACITY	BTU	CFM/SP	VOLTAGE	PHASE	AMP RATING	DIMENSIONS (LWH)	WEIGHT
CAPS	PHUH-ONN-150 KEONN	150 kW	512,000	8,000 / 5 in	480V	3PH	206A	96 in / 48 in / 50.6 in	2,500 lb
LB White	Volt 60	60 kW	205,000	1,765 / 3 in	480V	3PH	75A	46 in / 20 in / 25 in	125 lb
Campo	Blaze EB60E	68.8 kW	205,000	4,500 / 3 in	240/480V	3PH	144 / 72A	51.5 in / 22 in / 35.5 in	300 lb

INDIRECT FIRED



Operates like a mobile furnace with a fan forcing hot air over a heat exchanger where internal combustion takes place and with fumes exhausted through a stack.

Features include:

- 100% clean, dry heat with no open flame
- Great for drying and emergency, temporary heating and special events
- Ducting allows units to be placed outside and away from tents while pushing warm air inside



MAKE	MODEL	CAPACITY	BTU	CFM/SP	VOLTAGE	PHASE	AMP RATING	DIMENSIONS (LWH)	WEIGHT
Foreman	230 Oil	75 kW	230,000	1,900 / 2.5 in	120V	1PH	32 / 9A	60.2 in / 26.6 in / 43.3 in	363 lb
Foreman	500 Oil	150 kW	500,000	3,457 / 2.5 in	120V	1PH	35 / 14.8A	94 in / 32 in / 53 in	780 lb

THE 4-HORN CUSTOMER COMMITMENT



'Always Lead, Never Follow' is the promise we make our customers. At 4-Horn Power & HVAC, we strive for excellence and integrity in everything we do. When our people go to work, we set the bar for safety, expertise, and commitment.

This guiding principle is how we were founded. From how we hire, to how we grow relationships, to how we care for equipment and your job site, the 'Always Lead, Never Follow' mantra is at the heart.

You can get equipment anywhere. You choose 4-Horn because we lead the market and drive excellence.



THREE LOCATIONS TO SERVE YOU

4482-A Genoa Red Bluff Rd
Houston, TX 77059
800.381.0176

4365 W Cardinal Drive
Beaumont, TX 77705
409.273.0993

2410 FM 523
Oyster Creek, TX 77541
979.310.0065

ALWAYS LEAD, NEVER FOLLOW

888.386.3885 | 4HORNPOWER.COM